

Shanette Home Office Collection

Model 1

3.2m x 3m



<i>Shell Price</i>	€2,350
<i>Steel door or uPVC door</i>	€650
<i>1020mm x 760mm Window</i>	<u>€350</u>
<i>Total Price</i>	€3,350

3.2m x 3m Home Office

- 40mm roof & wall insulated in a Horizontal Flat Panel
- Wall height 2.2m up to 2.7m at top ridge
- Available in Golden Oak , Goosewing Grey or Olive Green
- Anthracite Grey roof with clearlights comes as standard
- 10pt Locking steel pedestrian door or uPVC pedestrian door
- 1020mm x 760mm Double glazed uPVC window
- Gutters & downpipes
- 80mm upgrade available-See price below

40mm Insulated Unit €3,350* inc VAT

80mm insulated Unit €3,950* inc VAT

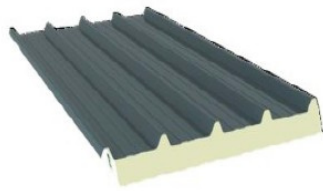
- **FREE delivery & installation within 100km**
- **Concrete base by others not included**
- **Side entrance with no overhead restriction required for installation.**

***Prices subject to change**

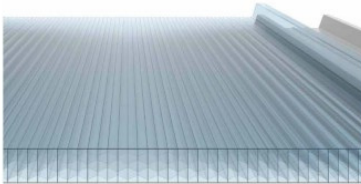
Wall profile



Roof profile



Clearlight profile



Tile profile- Optional extra



Example of how some of our customers fitted out their units. Interior fitout not included in pricing.

Window Colours & Sizes



1020mm x 760mm Top Opening
ANTHRACITE



1350mm x 1070mm French Style
WHITE



610mm x 1830mm Top Opening
GOLDEN OAK



1830mm x 1830mm Side Opening
BLACK

PVC Door Colours & Options



Half Glass Door
BLACK



Full Glass Door
WHITE



French Doors
ANTHRACITE GREY



Half Glass French Doors
GOLDEN OAK

- 40mm Composite panel Roof & Wall Insulation with a white metal backing. (80mm insulated upgrade available)
- Shanette Home Offices are of a very high quality, with a low U Value. The lower the U Value, the less heat loss, meaning it is cost-effective to heat.
- U Value 40mm Home Office W/m²K .43
- U Value 80mm Home Office W/m²K .25
- *Offices can easily be wired and fitted out by subcontractors- not included in price.*
- *PVC Fortex finish is available as an upgrade in a range of colours*
- *Additional doors & windows can be added to any home office*

We reserve the right to change prices and specifications of products without prior notice. Product descriptions, photographs, technical information and specifications are for guideline purposes.

Any photographic, specification or pricing errors are subject to correction.



Head Office & Show area : Kilbeggan, Co. Westmeath 057-9332294

Show Area: Dublin 01-4594993

www.shanette.ie

info@shanette.ie