

Step by Step of Overhang Concrete Base Installation

Shanette recommends a concrete base for all units, providing two options tailored to site and soil conditions. It's advisable to consult the sales team regarding these choices when placing an order. Upon request, a detailed base drawing, essential for ensuring the correct size, will be provided. It's important to note that **Shanette does not include the base in shed prices, and the company does not handle the installation. However, we can recommend a subcontractor for base preparation if required.**

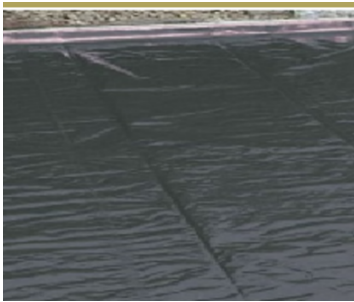


STEP 1:

Dig out the area for the shed and put in a timber frame for the concrete. Put in gravel, level it, and compress.

STEP 2:

Roll out the damp-proof course, bringing it up along the inside of the timber frame.



STEP 3:

Pour the base and leave it to set. The base cannot be flush with the ground to allow the shed to overhang the base by 40mm.

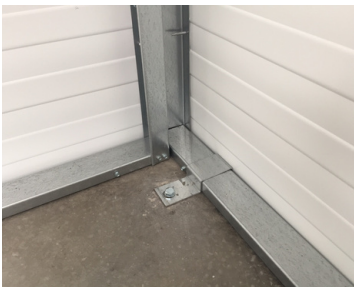
STEP 3:

Once the base is dry, remove the timber frame. The shed will be bolted to the base to secure it in place.

PLEASE NOTE:

Your concrete floor will need time to dry out fully once the shed is in place. The rule of thumb is to allow 1 month for every 25mm of concrete.

Shanette are not responsible for the actions or works carried out by independent contractors.



Regardless of the chosen base, please maintain a minimum of 300mm distance from any boundary wall or fence.