

DREAMING OF A HOME EXTENSION THAT DOESN'T INVOLVE MONTHS OF BUILDERS ON SITE? CONSIDER OUR BESPOKE STEEL FRAME EXTENSIONS.

BESPOKE IS WHAT WE DO BEST



LET US BUILD YOUR DREAM TOGETHER

Shanette Kilbeggan
057 933 2294
Tullamore Rd.
Kilbeggan.
Co. Westmeath
N91 PC56



Shanette Dublin
01 459 4993
160 JFK Industrial Rd.
JFK Industrial Estate.
Dublin 12,
D12 PY54

Celebrating 40 years of Shanette



CRAVING MORE SPACE?

Discover the Perfect Solution with Our Steel Frame Extensions

Unlock a New Era of Living: Embrace Space, Durability, and Beauty with The Shanette Extension. At Shanette, We Excel Beyond Garden Sheds - We Customise Buildings to Suit your Space!

Our PROCESS *Maximize Space - Minimize Hassle*



1 DESIGN & PLANNING CONSULTATION

Let's Bring Your Vision to Life!
Bring your dreams to the table, and we'll design the perfect space with you. We'll discuss your ideas and guide you through the best options.

2 CONCRETE BASE INSTALLATION

Turning Dreams into Foundations.
With your design finalised, our builders create a solid concrete foundation, precisely tailored to your extension's size and specifications.



3 STEEL FRAME EXTENSION ERECTION

Our team arrives at your site to erect your new steel frame extension. This includes pre-fitted composite panels for insulation, doors, windows and roofing. This precision-engineered structure provides strength and durability.

4 INTERIOR AND ELECTRICAL FINISHING

The builder returns to complete the interior fit-out, making the inside space just the way you want it. Electricians take care of all the electrical work to ensure everything functions perfectly.



SAMPLE SIZES	SHELL PRICE	TURN KEY
4.2m x 4m	€25,000	€43,500
5.2m x 4m	€27,500	€47,800
6.2m x 4m	€29,900	€52,000

Please note prices are budgets only, correct at time of print & subject to change.

Budget includes VAT & BCAR with Ancillary Certs

Shell price includes the main external shell required to be fitted to the current house only, with no base or internal work carried out.

The listed prices are based on our 'Standing Seam' show house finish.

** Turn Key Price includes the following:

- 80mm Standing Seam Cladding
- 1 No. Velux Window | 1 No. French Doors with Side Light
- 1 No. window | Kitchen and Painting.
- Internal lining (slabbed).
- Electrics - wired locally to electrical panel within Shanette unit, tie in to mains by others (price on application).
- Base | Base only on a level site, no allowance for removal of spoil/waste.
- No plumbing or mechanical services included.
- All connections to existing services by others.

Turn Key Price does not include plumbing or the final weathering to the existing dwelling."

Our CLIENTS



ADDING CHARM AND SPACE: THE BYRNE FAMILY'S DREAM HOME EXTENSION.

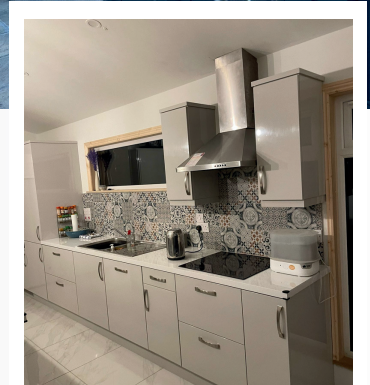
Last October, our clients faced the age-old question: to move or improve? Opting to enhance their living space, they embarked on a journey to extend their home.

The heart of their aspirations? A spacious, inviting kitchen nestled at the rear of their house.

This route brought affordability and speed. Unlike traditional brick extensions, their budget was spared, and delays were a distant memory. Off-site work ensured efficiency.

Today, the family revel in their enhanced home courtesy of Shanette Superior Space. Discover the future of home expansion with Shanette.

Celebrating 40 years of Shanette



TRANSFORMING THE MALONE'S HOME: FROM CRAMPED TO SPACIOUS BLISS WITH OUR STEEL FRAME EXTENSION.

In their quest for more space and a hassle-free home extension, this family chose the Shanette Superior Space solution opting for the Fortex finish.

Their decision was a smart blend of economics and efficiency, as this innovative extension method cost them a fraction of what traditional brick-and-mortar projects demand. Time, too, was on their side, as the process moved swiftly and steadily and a crane, effortlessly lifted the extension panels over the roof, eliminating any access headaches.

This family's journey was one of problem-solving from start to finish, and their extended home now stands as proof of their vision and our solution.



FORTEX OR STANDING SEAM FINISH AVAILABLE

We have a number of different finishing options available which we can discuss with you. You can see a sample of both in our case studies.