

## Step by Step of Rebate Concrete Base Installation

Shanette recommends a concrete base for all units, providing two options tailored to site and soil conditions. It's advisable to consult the sales team regarding these choices when placing an order. Upon request, a detailed base drawing, essential for ensuring the correct size, will be provided. It's important to note that **Shanette does not include the base in shed prices, and the company does not handle the installation. However, we can recommend a subcontractor for base preparation if required.**



### STEP 1:

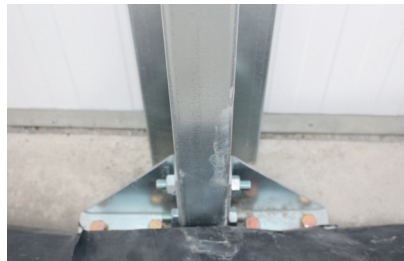
Pour a concrete rim to match the outer rebate measurements, ensuring it is allowed sufficient time to set.

### STEP 2:

Roll out the damp proof course, making sure to provide extra to extend along the inside wall of the shed. Position a timber frame 50mm high according to the inside rebate measurements, then pour the two floors simultaneously.

### STEP 3:

After placing the shed, fill the gap between the inner floor and the shed wall. Extend the damp proof course up along the inside of the shed wall, allowing for later trimming once the base has set. Ensure the concrete floor has ample time to dry out completely after the shed is in place.



### PLEASE NOTE:

**Shanette are not responsible for the actions or works carried out by independant contractors.**

**Regardless of the chosen base, please maintain a minimum of 300mm distance from any boundary wall or fence.**