

DREAMING OF A HOME EXTENSION THAT DOESN'T INVOLVE MONTHS OF BUILDERS ON SITE?
CONSIDER OUR BESPOKE STEEL FRAME EXTENSIONS.



LET US BUILD YOUR DREAM TOGETHER

Shanette Kilbeggan
057 933 2294
Tullamore Rd.
Kilbeggan.
Co. Westmeath
N91 PC56



Shanette Dublin
01 459 4993
160 JFK Industrial Rd.
JFK Industrial Estate.
Dublin 12,
D12 PY54



SHANETTE STANDING SEAM
SHEDS - GARAGES - BUILDINGS
SUPERIOR SPACE **HOME EXTENSIONS**



CRAVING MORE SPACE?

Discover the Perfect Solution with Our Steel Frame Extensions

Unlock a New Era of Living: Embrace Space, Durability, and Beauty with The Shanette Extension. At Shanette, We Excel Beyond Garden Sheds - We Customise Buildings to Suit your Space!

Our PROCESS *Maximise Space - Minimise Hassle*



1 DESIGN & PLANNING CONSULTATION

Let us Bring Your Vision to Life!
Bring your dreams to the table, and we'll design the perfect space with you. We'll discuss your ideas and guide you through the best options.



2 CONCRETE BASE INSTALLATION

Turning Dreams into Foundations.
With your design finalised, the builders lay a solid concrete foundation, customised to your extension's size and specifications.

3 STEEL FRAME EXTENSION INSTALLATION

Our team arrives at your site to install your new steel frame extension. This includes pre-fitted composite panels for insulation, doors, windows and roofing. This precision-engineered structure provides strength and durability.

4 INTERIOR AND ELECTRICAL FINISHING

Your builder returns to complete the interior fit-out, making the inside space just the way you want it.
Your electrician takes care of all the electrical work to ensure everything functions perfectly.



BCAR with Ancillary Certs can be provided.



D12 PY54

DREAMING OF A HOME EXTENSION?



VISIT OUR NEW HOME EXTENSION IN OUR DUBLIN SHOW AREA !



D12 PY54

Our CLIENTS



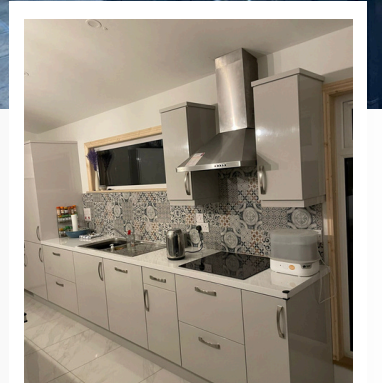
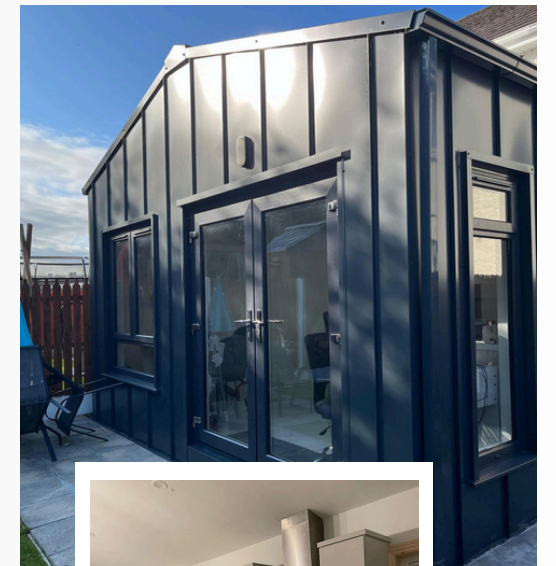
ADDING CHARM AND SPACE: THE BYRNE FAMILY'S DREAM HOME EXTENSION.

Last October, our clients were faced with the age-old question: to move or improve? Choosing to enhance their living space, they embarked on a journey to extend their home.

At the heart of their aspirations lay a spacious, inviting kitchen nestled at the rear of their house.

This path promised not only speed but also efficiency. Unlike traditional brick extensions, our off-site construction method ensured that their project stayed on schedule, sparing them from delays and unnecessary expenses.

Today, the family enjoys their expanded home, all thanks to Shanette Superior Space. Experience the future of home expansion with Shanette



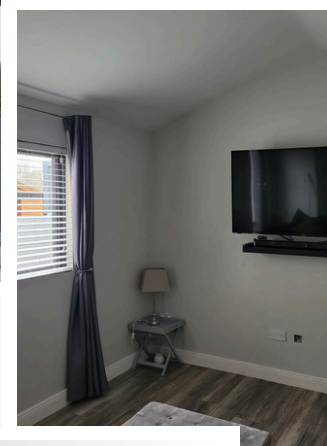
TRANSFORMING THE MALONE'S HOME: FROM CRAMPED TO SPACIOUS BLISS WITH OUR STEEL FRAME EXTENSION.

In their quest for more space and a hassle-free home extension, this family chose the Shanette Superior Space solution, opting for the Fortex finish.

Their decision was a smart blend of economics and efficiency, as this innovative extension method cost them a fraction of the time and was also cheaper than what traditional brick-and-mortar projects demanded at the time of the build.

The process moved swiftly and steadily, and a crane effortlessly lifted the extension panels over the roof, eliminating any access headaches.

This family's journey was one of problem-solving from start to finish, and their extended home now stands as proof of their vision and our solution.



FORTEX OR STANDING SEAM FINISH AVAILABLE

We have a number of different finishing options available which we can discuss with you. You can see a sample of both in our case studies.

Celebrating 40 years of Shanette